

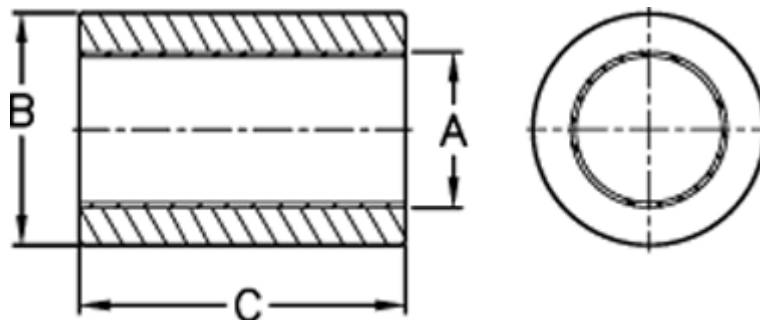
Data Sheet



Article number: 50402530030

Description: Sleeve bearing PSM 2530-30

Measures



A max	= 25.084	Bush weight kg = 0.01803
A min	= 25.042	Bush $\bar{\quad}$ external = 30
B max	= 30.056	Bush $\bar{\quad}$ internal = 25
B min	= 30.035	C max = 30
Bore "push-fit" max	= 30.021	C min = 29.50
Bore "push-fit" min	= 30.000	Shaft $\bar{\quad}$ = 30
Bore housing coarse fit max	= 30.081	Static load (kg) = 1576
Bore housing coarse fit min	= 30.056	